

Cost of Living Response



Local Response - Background

- ❑ Based on partnership working with Greenham Common Trust, Volunteer Centre and others
- ❑ Health and Wellbeing Board
- ❑ Community Appeal
- ❑ Scoping of local provision – meetings with voluntary sector, scoping documents
- ❑ Community winter spaces - mapping

**Emergency Cost of Living
Crisis Fund**



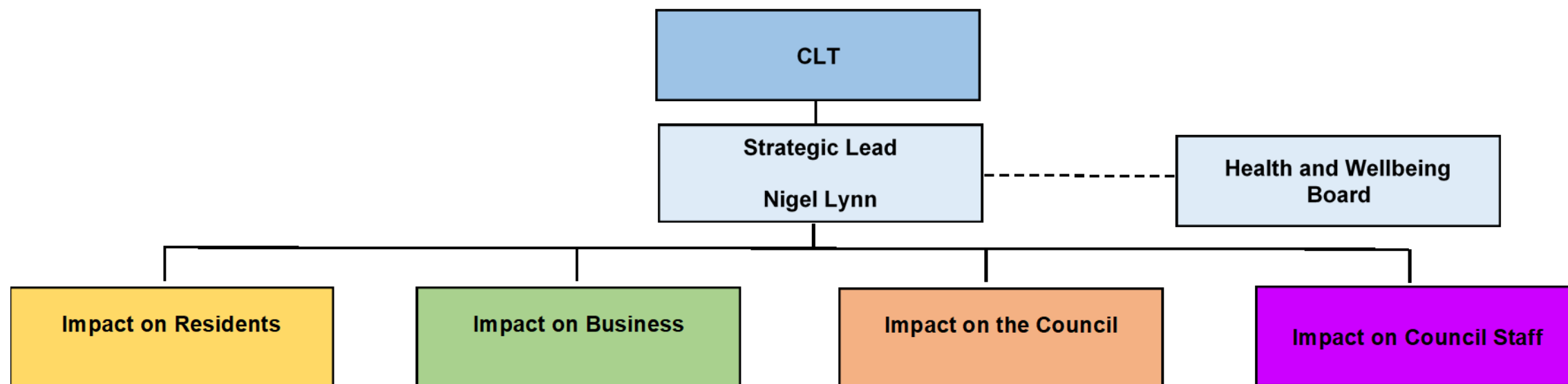
£100,000



WestBerkshire
C O U N C I L

WBC Response Structure

Cost of Living Response – Response Structure



Residents

- ❑ Residents Working Group
- ❑ Hub Working Group
- ❑ Communications Plan
- ❑ Cost of Living Hub
- ❑ Individual Service Priorities
- ❑ Individual residents who have never navigated the system



Services Engaged



- ❑ Building Communities
- ❑ Public Health
- ❑ Community Engagement
- ❑ Public Protection
- ❑ Housing
- ❑ Children and Family Services
- ❑ Adult Services
- ❑ Revenues and Benefits

Community Support Hub



Cost of Living Support Hub



Help for residents facing financial hardship

Contact the Cost of Living Support Hub to find:

- Financial support
- Help with food costs
- Help for families
- Health and wellbeing advice

Contact the hub in one of the following ways to find out more:

 www.westberks.gov.uk/cost-of-living-support-hub

 costofliving@westberks.gov.uk

 01635 503333





- ❑ Event at St John's Church
- ❑ Launched 24th October 2022
- ❑ Modelled on Covid Community Hub
- ❑ Merged with Homes for Ukraine Hub
- ❑ Staffed by secondees and other PPP / Hub Staff
- ❑ Advice, support, signposting and referrals
- ❑ Local and national support
- ❑ Safeguarding is the priority

Community Engagement - Communications

Cost of Living Support Hub



Help for residents facing financial hardship

Are you struggling to pay bills and make ends meet? Our Cost of Living Support Hub is here to help by providing advice and support to anyone facing financial hardship. We'll put you in touch with charities and local organisations who can help you, so please contact us.

Visit the hub online to find out more and contact the hub online:
www.westberks.gov.uk/cost-of-living-support-hub

You can also email the hub at:
costofliving@westberks.gov.uk
or telephone the hub on: 01635 503333.



The Cost of Living Support Hub is a community resource from West Berkshire Council, Greenham Trust and the Volunteer Centre West Berkshire – working with more than 20 local charities and community organisations. We're working to arrange physical drop in sessions across the district so that residents can speak to someone face to face. Keep an eye on our website:
<https://www.westberks.gov.uk/cost-of-living-support-hub> and on our social media channels for updates.

Contact the Cost of Living Support Hub to:

- Find financial support
- Help with food costs
- Help for families
- Health and wellbeing

Visit our website to find out how you can support people in need by donating money, food or time.

<https://www.westberks.gov.uk/cost-of-living-help>



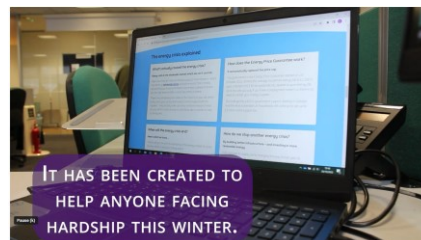
"It's a difficult time for many residents, including some who will need help for the first time and not know where to turn. We're here to help - providing advice and support, and putting those who need assistance with those in a position to give it. Working with our partners and the local community and voluntary sector, this hub will provide a valuable community resource this winter."

Lynne Doherty - Leader of the Council

Opening Hours

Monday to Thursday 8.30am - 5.00pm
Friday 8.30am - 4.30pm

[westberks](#) [westberks](#) [westberks](#)



More cash support for cost-of-living crisis

WEST Berkshire Council is to give out a further 204,000 in household support funds (HSF) from the Government. The cash, from the Department for Work and Pensions, is available until March next year. To date, the HSF has helped support more than 2,400 households to pay for energy bills, food, clothing and wider essentials. The funding has also supported more than 4,000 children in the district by providing free school meal vouchers. The council says the funding is limited and the remainder, after delivery of school meal vouchers, will be made available by an application process to assist vulnerable residents, pensioners and children across West Berkshire who are not eligible for other kinds of help or need further support. West Berkshire Council leader Lynne Doherty (Con, Speen) said: "It is important that our ongoing efforts to support residents this winter continues with this additional round of funding available to support our most vulnerable households in West Berkshire. "I am very pleased that the HSF has been extended as our role is pivotal to support those households and children locally that need it." The Household Support Fund can be accessed online at <https://www.westberks.gov.uk/householdsupportfund>. The council added that funding is limited and demand is high.

'This new hub will provide a one stop shop for residents struggling with bills'

By Niki Hinman Local Democracy Reporter
Published: 04:30, 03 October 2022



West Berkshire Council has launched a cost of living support hub for residents facing financial hardship this winter.

It will provide advice as well as matching residents' needs with support provided by local charities and voluntary organisations.

Cost of Living Support Hub



Find financial support

Find support options available locally and nationally using our interactive form. If you can't find the support you need, you can then fill in our contact form.



Help with food costs

Find out what support is available and advice for buying or accessing food.



Help for families

Find extra advice and general support available to help families cope with the cost of living.



Money saving tips

Find out extra money saving tips and other websites and organisations where you can find advice.



Health and wellbeing

Find out more about looking after your health and wellbeing if you're struggling with the cost of living.



How can I help?

Find out how you can help those struggling with the cost of living, including donating, volunteering and helping someone you're concerned about.



West Berkshire Cost of Living Hub is here to help local residents



Cost of Living Hub



The Cost of Living Support Hub has been set up to help make it easier for you to get advice and practical support if you are struggling with finances.

Staff are available to provide information around cost of living issues and to match your needs with the support available both nationally and locally, including from local charities and voluntary organisations.

You can browse the hub online to find information about financial support benefits, help with food costs and childcare, money saving tips, as well as support if your mental health is being affected.

If you need advice specific to your circumstances or need additional support, you can get in touch with our staff via the hub.

You can also email the hub or telephone the hub on 01635 503333.

The initiative has been set up by us in partnership with [Greenham Trust](#) and the [Volunteer Centre West Berkshire](#) and will work closely with the local community and voluntary sector.

The hub is open from Monday-Thursday 8.30-5.00pm and Friday 8.30am-4.30pm.

We have also created a short video to give you information about the hub.

[More Information available on our website](#)

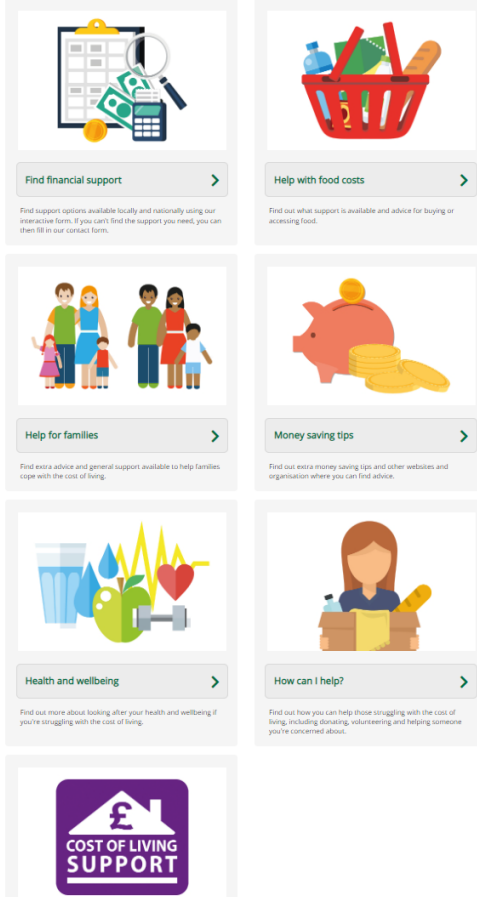
Cost of Living Hub



West Berkshire
COUNCIL

Community Engagement - Communications

Cost of Living Support Hub



- ❑ Leaflet drop to every house
- ❑ Targeted leaflet / poster distribution through voluntary sector, GPs, libraries, churches, etc.
- ❑ Cost of Living Communications Toolkit
- ❑ Outreach
- ❑ Website
- ❑ Social media: regular posts + Dec live event

Community Engagement - Communications



How you can help:

- ❑ Tell people
- ❑ Share leaflets/posters
- ❑ Post in social media groups
- ❑ Share details on your social media
- ❑ Share text for community publications
- ❑ Suggest community locations for drop-ins

pr@westberks.gov.uk or 01635 519125

Outreach

- ❑ Links with 'Be Well this Winter' Programme
- ❑ Use existing facilities such as family centres and libraries
- ❑ Explore the use of venues occupied by the voluntary sector such as the food bank, Citizens Advice, community hubs etc.
- ❑ Signposting from all venues
- ❑ Face to face meetings by appointment

New 'Be Well This Winter' – targeted outreach service

- ❑ On Monday 28th November, the new 'Be Well This Winter' service goes live, provided by Solutions4Health and their team of Wellbeing coaches.
- ❑ This highly targeted outreach service has been commissioned by the Public Health and Wellbeing team. The impact/ purpose of the Service is to contribute to the Council's efforts over Autumn and Winter 2022/23, to deliver these priorities in the Berkshire West Health and Wellbeing Strategy[1]:
 - "Reduce the differences in health between different groups of people."
 - "Support individuals at high risk of bad health outcomes to live healthy lives."
- ❑ The Service will provide the following by outreach services to priority groups of residents, under-served universal council and NHS services, including
 - Information-sharing and signposting on Cost of Living support and resources which are available to West Berkshire residents.
 - COVID-19 and 'Flu vaccine confidence conversations.
 - Scheduling and supporting the Health on the Move (HOTM) van visits (COVID-19 vaccinations).
 - Signposting to the local 'Flu vaccinations programmes
 - Information-sharing and signposting to the NHS Health Checks programme.
 - Self-Care conversations with residents to empower them with the confidence and information to look after themselves to prevent ill-health and hospitalisations.

Looking ahead.....

- ❑ Hub demand?
- ❑ Increasing demand for voluntary sector?
- ❑ Cold, long winter?
- ❑ Effects of inflation
- ❑ Household Support Fund
- ❑ Outreach - next steps
- ❑ Parish / Health and Wellbeing Conference

